

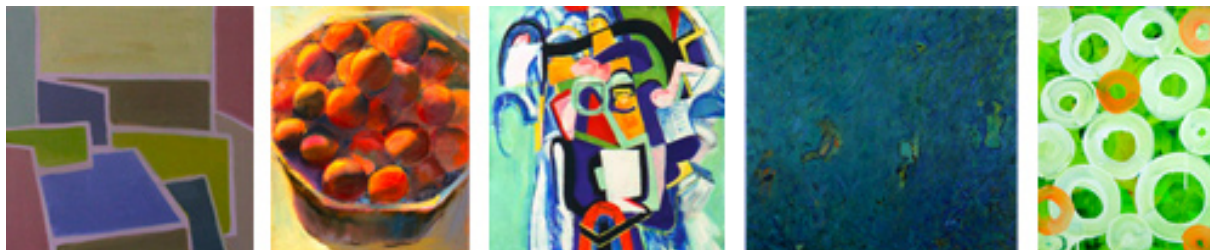
# THE PAINTING CENTER

52 Greene Street New York, NY 10013  
212-343-1060  
[www.thepaintingcenter.org](http://www.thepaintingcenter.org)

FOR IMMEDIATE RELEASE:

## THE PERSISTENCE OF PAINT

Carrie Patterson, Carmela Kolman, Elizabeth Yamin, Geoffrey Dorfman and Anne Russinof



**Dates:** July 7 - 29, 2006

**Opening Reception:** *Fri, July 7, 6 - 8 pm*

**Artists' Talk:** 5 - 6 pm

**Geoffrey Dorfman:** *Painting as a Spiritual Discipline*

The Bendheim Gallery of the Greenwich Arts Council will host **The Painting Center** of New York, July 7 - 29, in a diverse and lively exhibit entitled *The Persistence of Paint*. The painters included in this show, Carrie Patterson, Carmela Kolman, Elizabeth Yamin, Geoffrey Dorfman, and Anne Russinof, were selected by the Arts Council's gallery committee along with staff curator, Tatiana Mori.

The exhibit is designed to demonstrate the diversity and vitality of paint as a means of communication. **The Painting Center** is dedicated to promoting the art of painting in all its diversity and does not champion one school or style.

**Carrie Patterson** works much like a choreographer in subtly altering the arrangement of line, shape and color in repetitive action, not on a dance floor but rather on a canvas. She received her MFA at the University of PA and has also studied at the NY Studio School, James Madison University, and the British Institute.

**Carmela Kolman** received a BFA from the Rhode Island School of Design in 1982 and an MFA from Yale University School of Art in 1984. She has exhibited widely in New York City. About her work she says, "As a former figure painter, I have turned my attention to fruit because they are living, voluminous objects that, like the human form, decay over time."

New York City-based **Elizabeth Yamin** has been strongly influenced by her studio location, the Brooklyn Navy Yard, with its sense of hugeness, weight and inspiring decay. She received her MS in Museum Education at the Bank Street College in Manhattan.

Painter, writer and musician, **Geoffrey Dorfman**, received his BFA from Cooper Union in Manhattan, and his MFA from Syracuse University. As an associate professor at the College of Staten Island/CUNY since 1978, he has taught painting, drawing and modern culture. He has authored several articles on painting for *Artforum* and on music for *Stagebill*, and his recently published book, *Out of the Picture: Milton Resnick and the New York School* has received rave reviews.

**Anne Russinof's** forms suggest something along the lines of cellular biology. Each painting employs a collection of donut-like shapes assembled into different collections, reflecting nature's seemingly random and yet organizing principles. Anne has a BFA from The Art Institute of Chicago and an MFA from Pratt Institute in NY. More of her work can be seen at <http://www.annerussinof.com>.

**The Greenwich Arts Council** promotes the arts by nurturing artists and building audiences.

The Bendheim Gallery • 299 Greenwich Avenue, 2nd floor • Greenwich, CT 06830 • 203.622.3998  
<http://www.greenwicharts.org> • DIRECTIONS AND MAPS: <http://www.greenwicharts.org/directions.asp>

**GALLERY HOURS:** Mon-Fri: 10 am - 5 pm, Thursday: to 7 pm, Saturday: Noon - 5 pm

---

The Painting Center is a non-profit tax-exempt artist-run organization. Its purpose is to exhibit and promote painting in all its diversity and possibility; it does not champion one school or tradition. Works of young, middle-career, and emerging artists as well as mature artists are exhibited. Gallery hours: Tuesday - Saturday 11- 6